



# PowerEdge Tower Servers

Dell EMC PowerEdge tower servers offer powerful performance, versatility and quiet operations to small and home offices, remote offices, and data centers.



Tower servers come in a wide range of sizes, from mini-towers to rack-capable platforms and can adapt to changing workloads with flexible expansion options. Build a strong, scalable, and modern IT infrastructure with the PowerEdge tower servers portfolio.

	T640	T440	T340
PowerEdge Tower Servers			
Key attributes	<b>Powerful and scalable</b>	<b>Flexible and expandable</b>	<b>Reliable and scalable</b>
Target workloads	Business intelligence, ERP and HPC.	Virtualization, web serving, and server consolidation.	Collaboration, sharing, and database applications.
Type of processor	Up to two 2 <sup>nd</sup> Generation Intel® Xeon® Scalable processors		Up to one of the following processors: Intel® Xeon® E-2200 product family, Intel® Pentium® G5420 processor, Intel® Core i3® 9100, Intel® Celeron® G4930
Memory (DDR4 DIMM slots (& max))	24 (3TB)	16 (1TB)	4 (64GB)
Speeds up to (MT/s)	2993	2666	
Drives up to	32 x 2.5" or 18 x 3.5"	16 x 2.5" or 8 x 3.5"	8 x 3.5" <sup>1</sup>
NVMe drives up to	8	N/A	
Gen 3 PCIe slots up to	8	5	4
GPU support up to	4 x 300W or 8 x 150W	Up to 1 x 150W	N/A
Power Supplies (PSU)	Single or dual 495W, 750W, 1100W, 1600W, 2000W or 2400W hot plug	Single or dual 495W, 750W, 1100W hot plug PSU or 450W cabled	Single or dual 495W hot plug, or single 350W cabled
Form factor	5U rack or tower		Tower
Max depth (mm)	750	594.8	603
Integrated security	TPM 1.2/2.0 optional, Digitally Signed Firmware, and Secure Boot being standard security on all towers. Integrated security features such as Silicon Root of Trust, System Lockdown (requires OpenManage Enterprise), Chassis Intrusion Alert, and System Erase come standard on all racks except T40.		

<sup>1</sup> 4 x 3.5" plus 2 x 2.5" with expansion kit

<sup>2</sup> Available with customer kit

© 2019 Dell Inc. or its subsidiaries. All Rights Reserved. Dell, EMC and other trademarks are trademarks of Dell Inc. or its subsidiaries. Other trademarks may be trademarks of their respective owners. This document is for informational purposes only. Dell reserves the right to make changes without further notice to any products herein. The content provided is as is and without express or implied warranties of any kind. Other trademarks may be trademarks of their respective owners.

PowerEdge Tower Servers	<p style="text-align: center;"><b>T140</b></p> 	<p style="text-align: center;"><b>T40</b></p> 
Key attributes	<b>Easy to use and secure</b>	<b>Dependable and efficient</b>
Target workloads	Mail/messaging, file/print, and point of sale	File sharing and print.
Type of processor	Up to one of the following processors: Intel® Xeon® E-2200 product family, Intel® Pentium® G5420 processor, Intel® Core i3® 9100, Intel® Celeron® G4930	Up to one Intel® Xeon® E-2224G processor
Memory (DDR4 DIMM slots (& max))	4 (64GB)	
Speeds up to (MT/s)	2666	
Drives up to	4 x 3.5"	3 x 3.5" <sup>2</sup>
NVMe drives up to	N/A	
Gen 3 PCIe slots up to	4	3
GPU support up to	N/A	
Power Supplies (PSU)	365W cabled	300W cabled
Form factor	Mini-tower	
Max depth (mm)	454	359.5
Integrated security	TPM 1.2/2.0 optional, Digitally Signed Firmware, and Secure Boot being standard security on all towers. Integrated security features such as Silicon Root of Trust, System Lockdown (requires OpenManage Enterprise), Chassis Intrusion Alert, and System Erase come standard on all racks except T40.	

<sup>1</sup> 4 x 3.5" plus 2 x 2.5" with expansion kit

<sup>2</sup> Available with customer kit

© 2019 Dell Inc. or its subsidiaries. All Rights Reserved. Dell, EMC and other trademarks are trademarks of Dell Inc. or its subsidiaries. Other trademarks may be trademarks of their respective owners. This document is for informational purposes only. Dell reserves the right to make changes without further notice to any products herein. The content provided is as is and without express or implied warranties of any kind. Other trademarks may be trademarks of their respective owners.

## Dell EMC Solutions

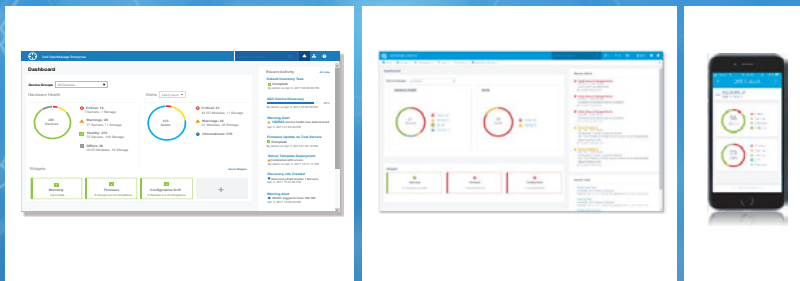
When you buy a Dell EMC server, you get more than just hardware. You get access to IT solutions end-to-end.

Dell and EMC bring together industry-leading expertise into a common platform to help you transform your data center. Dell EMC can deliver PowerEdge technology at any level of integration – from a best-in-breed platform, to a pre-integrated fully turnkey hybrid cloud implementation or any step in-between.



Combining the PowerEdge server infrastructure with Dell Services and Financial Solutions allows you to modernize your data center faster, more affordably and with less risk.

## OpenManage Systems Management



Increase the productivity, reliability and cost effectiveness of your Dell EMC PowerEdge servers while making your IT operations more efficient as well. Designed for use by today's IT Professionals, the Dell EMC OpenManage Enterprise console simplifies, intelligently automates and unifies infrastructure management tasks.

Though primarily designed to monitor, configure and update tower, rack and modular PowerEdge servers, OpenManage Enterprise also provides end-to-end infrastructure monitoring capabilities for Dell EMC storage and networking devices plus third-party hardware too.

Add OpenManage Mobile to enable your IT Pros to receive and take action on both Dell EMC and third-party hardware events anytime, anywhere. OpenManage Integrations enables both hardware and software infrastructure management without leaving third party consoles such as VMware vCenter and Microsoft System Center.

## Dell EMC Services



To fully implement a modern infrastructure, organizations require reliable, comprehensive IT services to drive IT transformations, accelerate adoption of new technologies, and maximize productivity.

**Architect:** Get started with our IT Transformation Workshop to accelerate your transformation to becoming an agile business partner and broker of services to the business.

**Implement:** The ProDeploy Enterprise Suite helps you get more out of your new technology, starting day one. Trust Dell EMC experts to lead deployments from basic hardware installations through planning, configuration and complex integrations.

**Manage:** The ProSupport Enterprise Suite ensures 24x7 access to senior ProSupport engineers along with automated proactive and predictive service enabled by SupportAssist. Our personalized service and preventative measures help you get ahead of problems before they happen.

## Dell EMC Data Center Infrastructure

Dell EMC Data Center Infrastructure (DCI) simplifies and manages critical infrastructure in and around the data center, serving the needs of your business.

A complete portfolio of racks, power and cooling solutions lets you scale as your data center needs grow.

To find out more visit Demand Generation Center on Partner Portal:

<https://www.dell EMC.com/partner/en-us/auth/campaigns/server.htm>

\*Not all features are available on all platforms. For a comprehensive list, visit [dell.com/servers](https://www.dell.com/servers)  
 © 2019 Dell Inc. or its subsidiaries. All Rights Reserved. Dell, EMC and other trademarks are trademarks of Dell Inc. or its subsidiaries. Other trademarks may be trademarks of their respective owners.

